

30W Single Output Industrial DIN Rail Power Supply (HDR-30)



HDR-30...

Feature

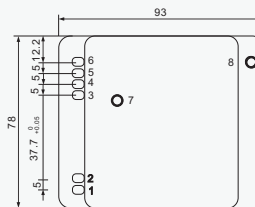
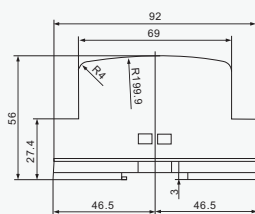
- Universal AC input/ full range
- Protections: Short circuit/ Over load/ Over voltage
- Cooling by free air convection
- Can be installed on DIN rail TS-3.5/7.5 or 15
- Isolation class II
- LED indicator for power on
- 100% full load burn-in test
- 3 years warranty
- Dimensions: 78*93*56mm (W*H*D)

Notes:

- All parameters NOT specially mentioned are measured at 230VAC input, rated load and 25°C of ambient temperature.
- Ripple & noise are measured at 20MHz of bandwidth by using a 12" twisted pair-wire terminated with a 0.1μ & 47μf parallel capacitor.
- Each output can within current range. But total output power can't exceed rated load
- The power supply is considered a component which will be installed into a final equipment. The final equipment must be re-confirmed that it still meets EMC directives.

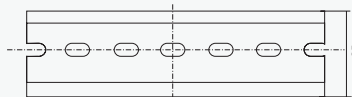
Model	HDR-30-5	HDR-30-12	HDR-30-15	HDR-30-24	
Output	DC Voltage	5V	12V	15V	24V
	Voltage Tolerance	±2%	±1%	±1%	±1%
	Rated Current	3A	2A	2A	1.5A
	Current Range	0-3A	0-2A	0-2A	0-1.5A
	Rated Power	15W	24W	30W	36W
	Ripple & Noise	80mVp-p	120mVp-p	120mVp-p	150mVp-p
	DC Voltage Adj.Range	-5%, +10%	±10%	±10%	±10%
	Setup,Rise,Hold Time	100ms,30ms/230VAC 100ms,30ms/115VAC at full load			
Input	Voltage Range	85~264 VAC 47-63 Hz; selected by switch 120~370VDC			
	AC Current	0.88 A/115 V 0.48A/ 230 V			
	Efficiency	74%	81%	82%	83%
	Inrush Current	Cold start 15A/115V 30A/230V			
Protection	Over Load	105%~160% Protection type: Constant current limiting, recovers automatically after fault condition is removed			
	Over Voltage	115%~135% Protection type: Shut down o/p voltage, re-power on to recover			
Environment	Working Temp & Humidity	-10°C~+60°C, 20%~90 %RH			
	Storage Temp & Humidity	-40°C~+85°C, 10%~95 %RH			
	Vibration	10~500Hz, 2G 10min/1cycle, period for 60min, each along X, Y, Z axes			
Safety	Withstand Voltage	I/P-O/P: 3KVAC			
	Isolation Resistance	I/P-O/P: 100M Ohms / 500VDC			
Standards	Safety Standard	Design refer to UL60950-1,TUV EN60950-1,EN50178			
	EMC Standard	Design refer to EN55011,EN55022,EN61000-3-2,-3,EN61000-4-2,3,4,5,6,8,11, ENV50204,EN55024,EN61000-6-2,EN61204-3			
Others	Weight	0.27Kg			
	Packing	48pcs/14Kg/1.02CUFT			

Outline and dimension



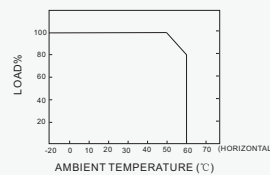
Terminal Pin No. Assignment

Pin No.	Assignment	Pin No.	Assignment
1	AC/N	5, 6	-V
2	AC/L	7	LED
3, 4	+V	8	+VADJ.



ADMISSIBLE DIN-RALL:TS35/7.5 OR TS35/15

■ Output Derating



■ Output Derating VS Input Voltage

