

**40W Triple Output Switching Power Supply**



**GT-40...**

**Feature**

- High efficiency, high reliability
- Universal AC input / full range
- 100% full load burn-in test
- Protection:  
Short circuit/ Over load /Over voltage
- Cooling by free air convection
- Fixed switching frequency at 40KHz
- 2 years warranty
- Dimensions: 129\*98\*38mm (L\*W\*H)

**Notes:**

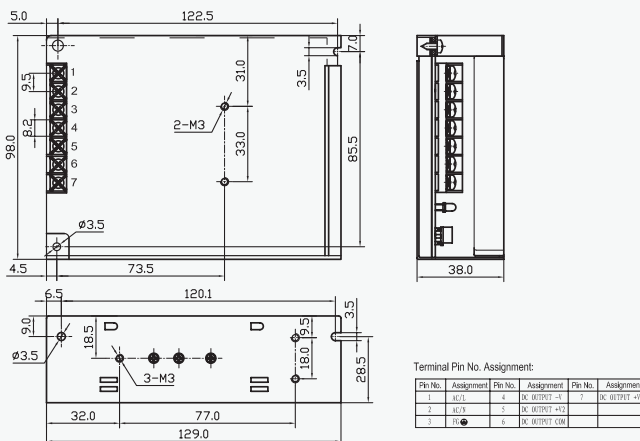
- All parameters NOT specially mentioned are measured at 230VAC input, rated load and 25°C of ambient temperature.
- Ripple & noise are measured at 20MHz of bandwidth by using a 12" twisted pair-wire terminated with a 0.1μ & 47μf parallel capacitor.

- Each output can within current range. But total output power can't exceed rated load

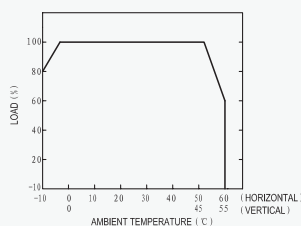
- The power supply is considered a component which will be installed into a final equipment. The final equipment must be re-confirmed that it still meets EMC directives.

Model	GT-40A			GT-40B			GT-40C			
	CH1	CH2	CH3	CH1	CH2	CH3	CH1	CH2	CH3	
Output	DC Voltage	5V	12V	-5V	5V	12V	-12V	5V	15V	-15V
	Voltage Tolerance	±2%	±6%	±8%	±2%	±6%	±8%	±2%	±6%	±6%
	Rated Current	3A	2A	0.5A	3A	2A	0.5A	3A	1.5A	0.5A
	Current Range	0.6-5A	0.2-3A	0.1-1A	0.6-5A	0.2-3A	0.1-1A	0.6-5A	0.2-3A	0.1-1A
	Rated Power	41.5W			45W			45W		
	Ripple & Noise	100mVp-p	100mVp-p	120mVp-p	100mVp-p	120mVp-p	120mVp-p	100mVp-p	120mVp-p	120mVp-p
	DC Voltage adi. Range	CH1: -5%, +10%								
Setup,Rise,Hold Time	800ms,50ms,60ms/230VAC 1.6ms,50ms, 16ms/115VAC at full load									
Input	Voltage Range	85-264 VAC / 47-63 Hz, 120-370VDC								
	AC Current	1.2A/115 V.0.7A/ 230 V								
	Efficiency	72%/115VAC								
	Inrush Current	Cold start 20A/115V40A/230V								
	Leakage Current	<3.5mA/240VAC								
Protection	Over Load	105%~150% /115VAC Protection type: Fold back current limiting, recovers automatically after fault ondition is removed								
	Over Voltage	5V:115%~135% Protection tyoe: hiccup mode, recovers automatically after fault ondition is removed								
Environment	Working Temp & Humidity	-10°C~+60°C, 20%-90 %RH								
	Storage Temp & Humidity	-20°C~+85°C, 10%-95 %RH								
	Vibration	10-500Hz, 2G 10min./1cycle, period for 60min, each along X, Y, Z axes								
Safety	Withstand Voltage	I/P-O/P: 3KVAC I/P-FG: 1.5KVAC O/P-FG: 0.5KVAC								
	Isolation Resistance	I/P-O/P, I/P-FG, O/P-FG: 100M /500VDC								
Standards	Safety Standard	Design refer to CSA 950, (UL1950, IEC950, TUV EN60950)								
	EMC Standard	Design refer to EN55022(CLSPPR22),EN61000-3-2,-3, EN61000-4-2,3,4,5,6,8,11; ENV50204, EN55024								
Others	Weight	0.44Kg								
	Packing	45pcs/18Kg/1.22CUFT								

**Outline and dimension**



**Derating Curve**



**Static Characteristics(B)**

