

70W Single Output Switching Power Supply



GS-70...

Feature

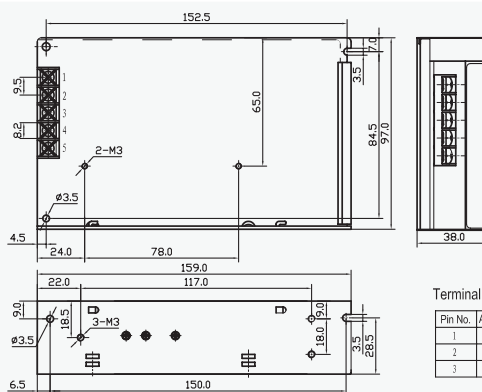
- High efficiency, high reliability
- AC input range selected by switch
- 100% full load burn-in test
- Protection:
 Short circuit / Over load/ Over voltage
- Fixed switching frequency at 50 KHz
- Cooling by free air convection
- 2 years warranty
- Dimensions: 159*97*38mm(L*W*H)

Notes:

- All parameters NOT specially mentioned are measured at 230VAC input, rated load and 25°C of ambient temperature.
- Ripple & noise are measured at 20MHz of bandwidth by using a 12" twisted pair-wire terminated with a 0.1μf & 47μf parallel capacitor.
- Each output can within current range. But total output power can't exceed rated load
- The power supply is considered a component which will be installed into a final equipment. The final equipment must be re-confirmed that it still meets EMC directives.

Model		GS-70-12	GS-70-15	GS-70-24	GS-70-48
Output	DC Voltage	12V	15V	24V	48V
	Voltage Tolerance	±1%	±1%	±1%	±1%
	Rated Current	6A	4.8A	3A	1.5A
	Current Range	0-6A	0-4.8A	0-3A	0-1.5A
	Rated Power	72W	72W	72W	72W
	Ripple & Noise	120mVp-p	150mVp-p	150mVp-p	200mVp-p
	DC Voltage adi. Range	+10%	±10%	±10%	±10%
	Setup,Rise,Hold Time	800ms, 50ms,10ms/115VAC300ms,50ms, 80ms/230VAC at full load			
Input	Voltage Range	85-264 VAC47-63 Hz, 120-370VDC			
	AC Current	2A/115V 1A/ 230 V			
	Efficiency	76%	77%	79%	80%
	Inrush Current	Cold start 30A/115VAC 60A/230VAC			
	Leakage Current	<3.5 mA/240VAC			
Protection	Over Load	135%~165% Protection type: Fold back current limiting, recovers automatically after fault condition is removed			
	Over Voltage	115%~135% Protection type: hiccup mode, recovers automatically after fault condition is removed.			
Environment	Working Temp., Humidity	-10°C~+60°C; 20%~90 %RH			
	Storage Temp., Humidity	-20°C~+85°C; 10%~95 %RH			
	Vibration	10-500Hz, 2G 10min./1cycle, period for 60min, each along X, Y, Z axes			
Safety	Withstand Voltage	I/P-O/P: 3KVAC I/P-FG: 1.5KVAC O/P-FG: 0.5KVAC			
	Isolation Resistance	I/P-O/P, I/P-FG, O/P-FG:100M /500VDC			
Standards	Safety Standard	Design refer to UL1012, UL1950, TUV EN60950			
	EMC Standard	Design refer to EN55022, EN61000-3-2,-3, EN61000-4-2,3,4,5,6,8,11;ENV50204,EN55024			
Others	Weight	0.51Kg			
	Packing	30pcs/16Kg / 0.86CUFT			

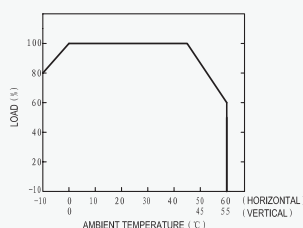
Outline and dimension



Terminal Pin No. Assignment:

Pin No.	Assignment	Pin No.	Assignment
1	NC/L	4	DC OUTPUT -Y
2	NC/N	5	DC OUTPUT +Y
3	FE		

Derating Curve



Static Characteristics(24V)

